

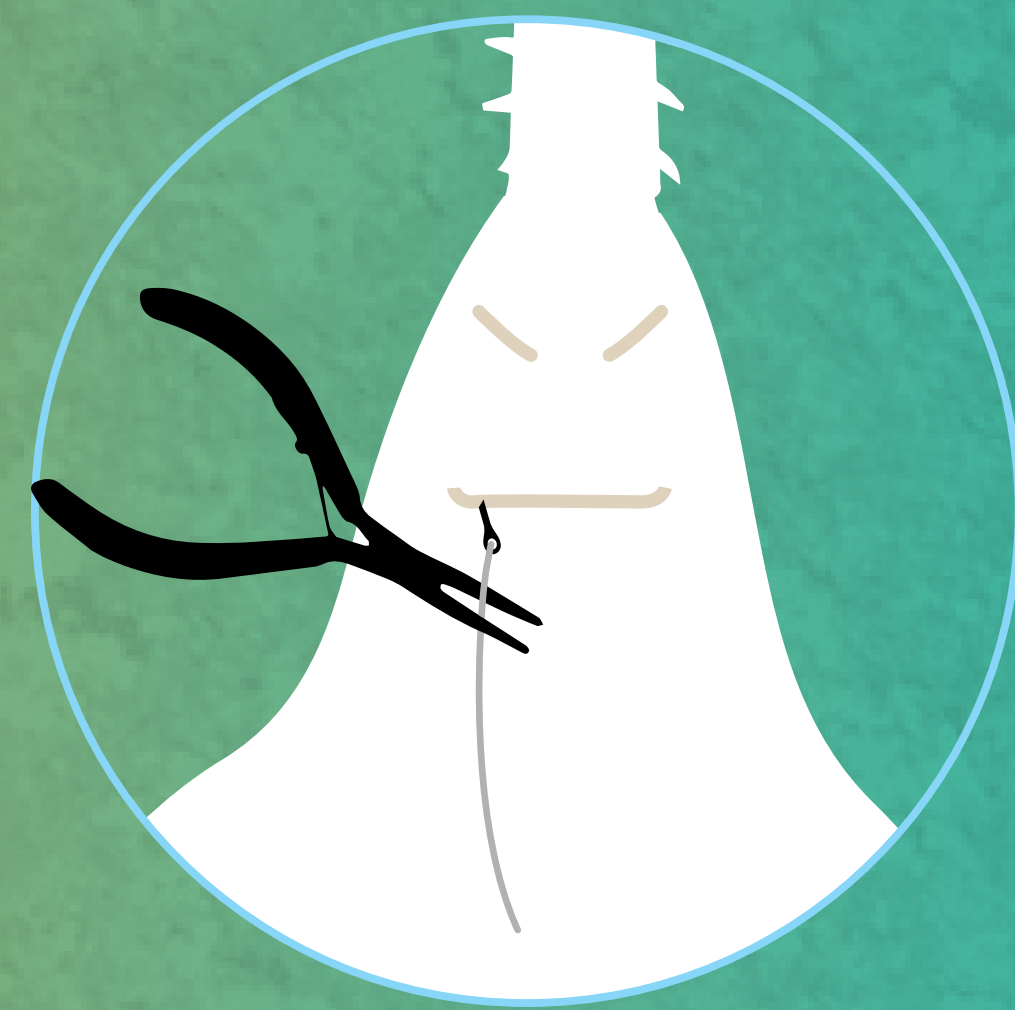
YOU CAN HELP SAVE SAWFISH

RELEASE

KEEP THE SAWFISH SUBMERGED IN WATER, ESPECIALLY THE GILLS, IF SAFE TO DO SO. DO NOT REMOVE THE SAW.

CAUGHT ON A LINE?

Cut the line close to the hook.



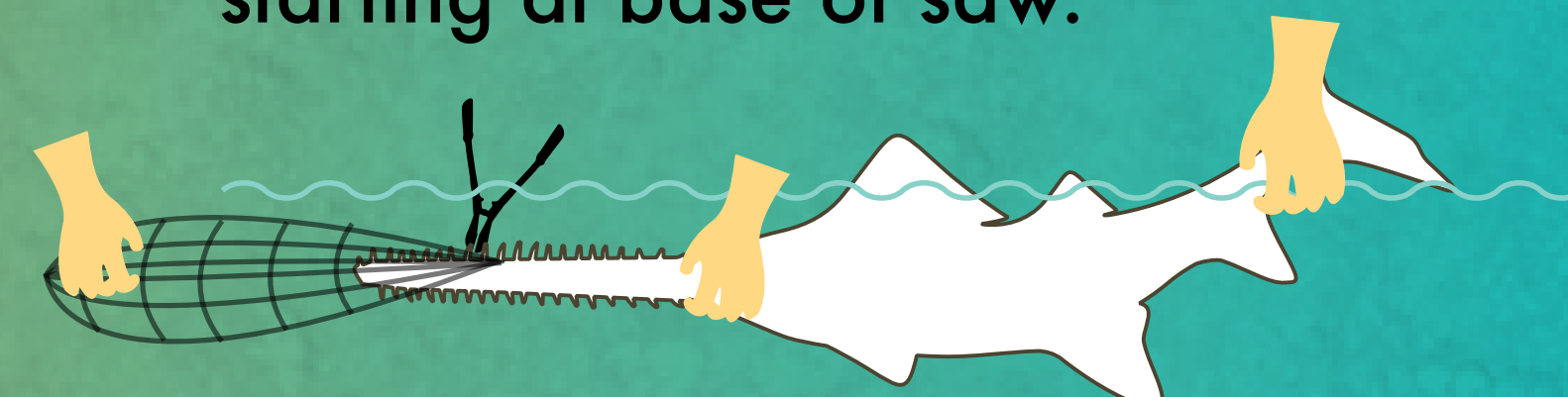
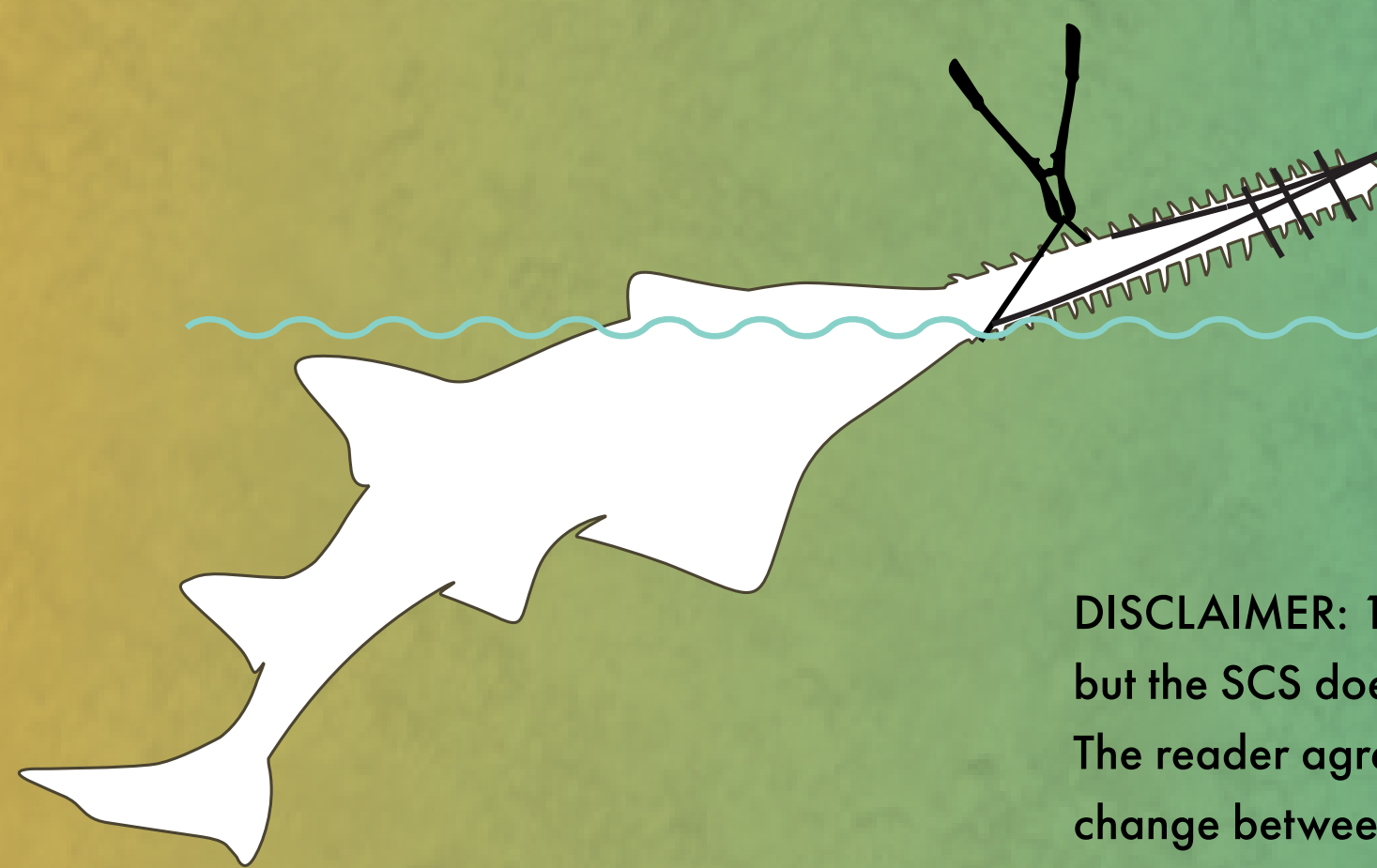
CAUGHT IN A NET?

LARGE SAWFISH

1. Secure net to side of boat.
2. Use long tool to cut net from body, then from saw.




SMALL SAWFISH

1. Hold tail, base of saw, and net.
2. Turn sawfish upside down.
3. Use tool to cut or free net starting at base of saw.



DISCLAIMER: 1. These release tips are provided to reduce risk of injury to you and the sawfish, but the SCS does not take responsibility for any injury incurred in the use of these suggestions. The reader agrees to these terms when using these tips. 2. Rules on how to handle sawfish can change between countries. Make sure to check the regulations in your country.

RECORD & REPORT

-  THE SAWFISH TYPE & ESTIMATED LENGTH
-  DATE / TIME
-  LOCATION
-  PHOTOS



Please report your sawfish encounter information to your local fisheries group or to us, and we will send it to the appropriate agency.

SAWFISH ARE NEARLY EXTINCT

BECAUSE OF

TRADE

The international trade of sawfish parts is illegal, but sawfish still need local protection in many regions.

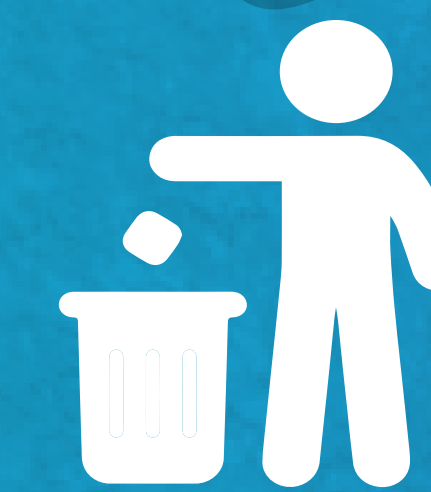
BYCATCH

Sawfish are easily entangled in fishing gear and are often caught unintentionally.

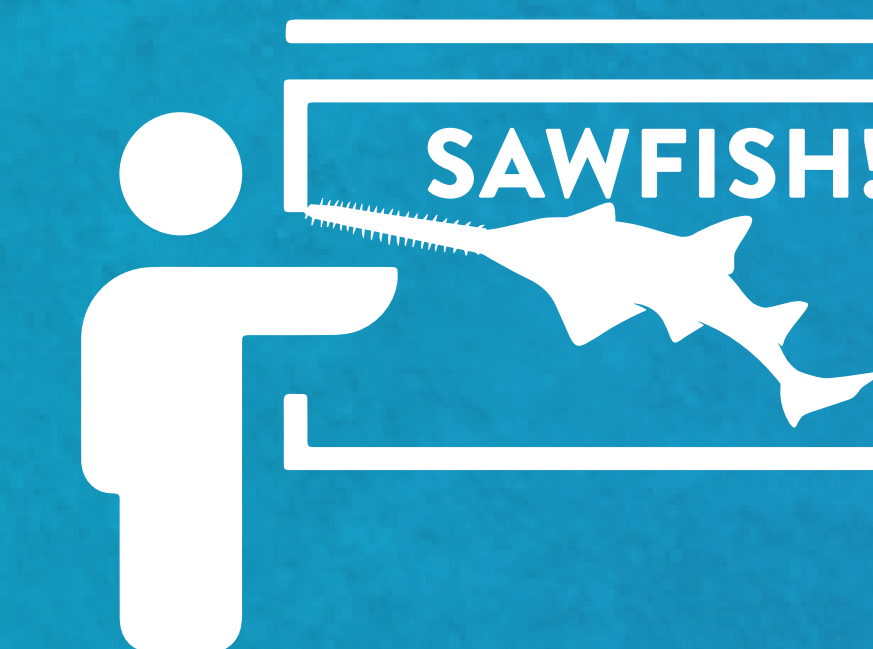
HABITAT LOSS

Humans are modifying nearshore habitat needed by young sawfish to survive.

KIDS CAN HELP TOO!



Properly dispose of fishing lines, nets, and garbage that sawfish can get entangled in.



Tell your friends and family about sawfish.

